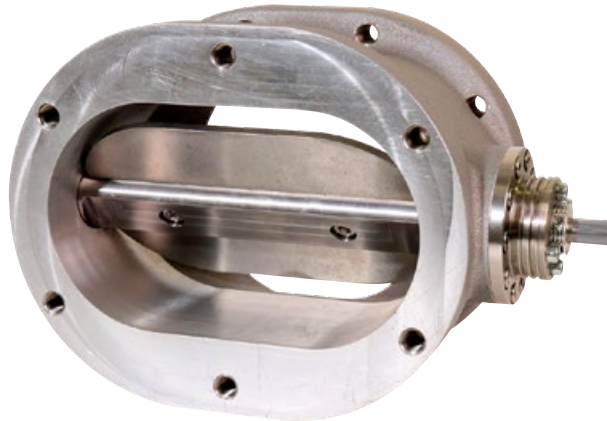


DK 250-150-HT

DATA SHEET

Description

For high-powered turbocharged gas engines elaborate control elements are required to achieve precise and reliable operation. HEINZMANN offers this equipment, comprising components especially for a high temperature range.



The high-temperature throttle valve DK 250-150-HT in particular is suitable for use in gas combustion engines and can be installed directly after the turbocharger.

The valve provides 72° rotation angle and is equipped with an integrated end stop in the closed position which reduces leakage over the valve to a minimum. In addition, the valve's conception excludes jamming caused by differential thermal expansion.

Due to diligent material combination the valve obtains an increased level of corrosion resistance. Besides that it is markedly durable and completely maintenance-free. Additionally, fuel type and quality do not interfere application so the valve is suitable for bio, landfill and sewage gas.

Technical data

Angle of rotation	72°	72°
Inlet cross-section	176 cm ²	27.3 in ²
Outlet cross-section	211 cm ²	32.7 in ²
Permissible pressure difference across valve	6.0 bar	87 psi
Operating temperature	-25 ... 250 °C	-15 ... 480 °F
Weight	approx. 9.6 kg	approx. 21 lb

Application range

➔ Gas and dual-fuel combustion engines with high operating temperature

Features

250 °C permanent operation temperature

Up to 6 bar differential pressure permissible across throttle valve

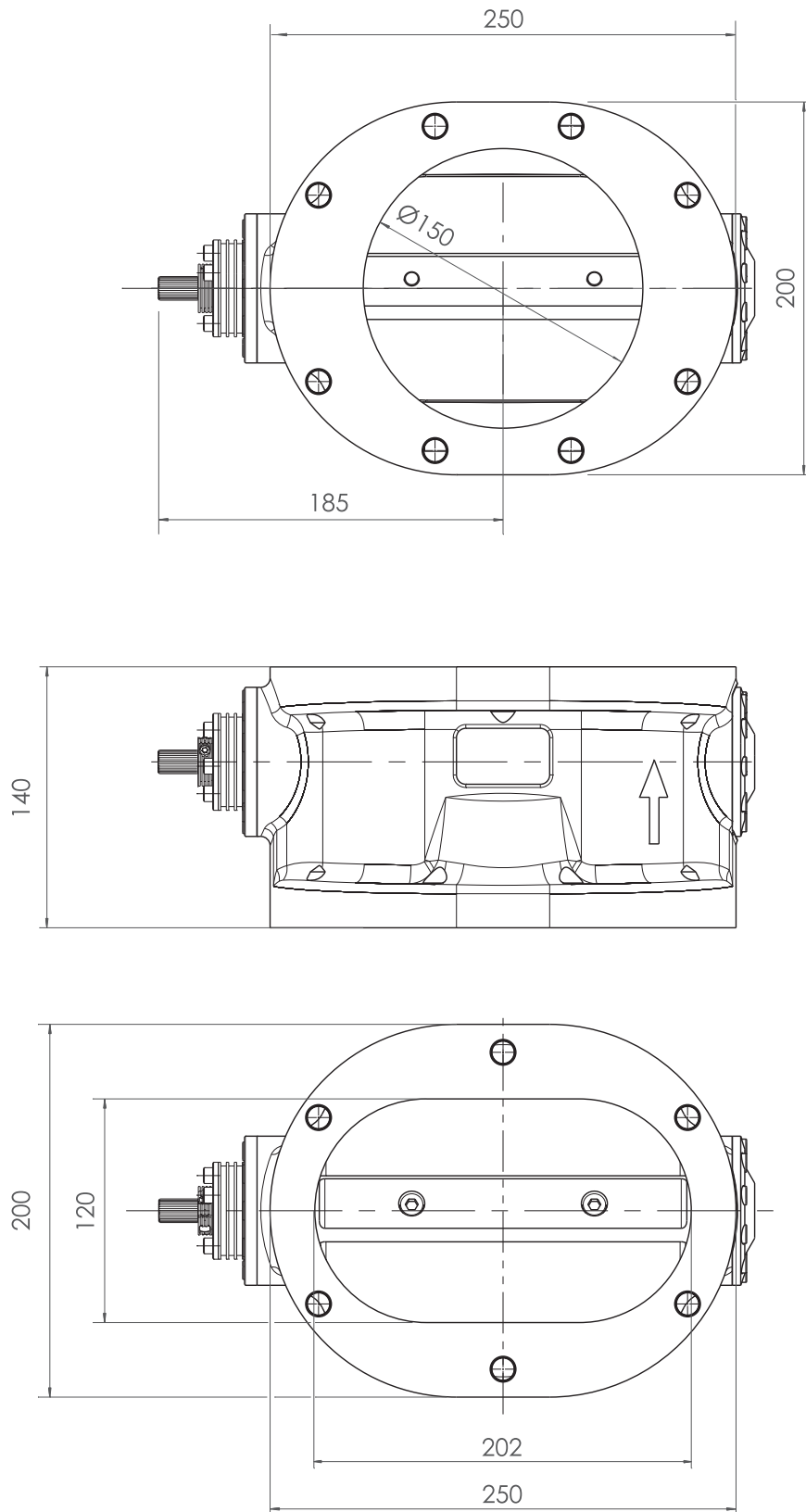
Mixture control directly after turbo charger

Best sliding on a large temperature range

Increased level of corrosion resistance

Suitable for bio, landfill and sewage gas

Dimensions



Subject to alterations. ©HEINZMANN GmbH & Co. KG, 2019



Heinzmann GmbH & Co. KG
Am Haselbach 1
D-79677 Schönau/Germany

Phone: +49 7673 8208 - 0
Fax: +49 7673 8208 188
Email: info@heinzmann.de