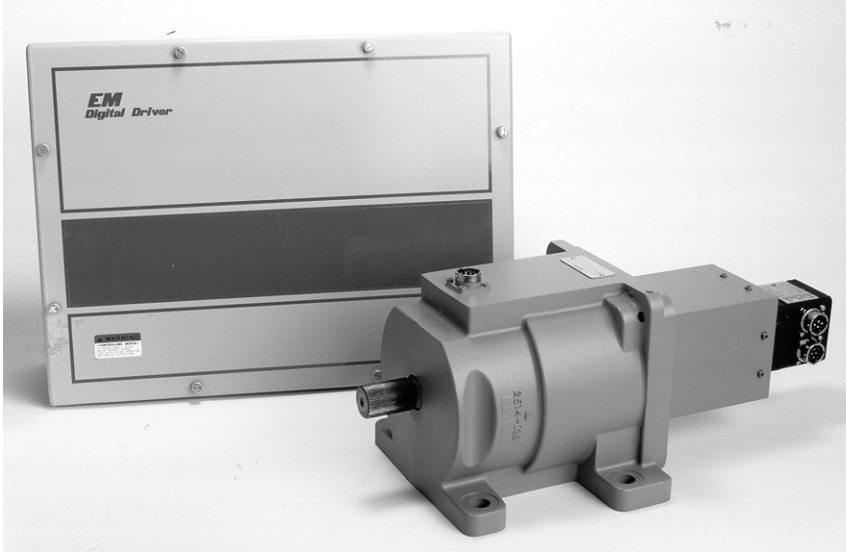


EM-70 and EM-140

Rotary Output Electric Actuators and EM Digital Driver



Applications

The EM-70 and EM-140 Actuators, when driven by the EM driver, are designed to position engine fuel injection control linkage, flow control valves, and gas turbine variable geometry systems.

Features

The EM-70 and EM-140 Actuators consist of a high-performance, rugged brushless servomotor and a precision planetary gearbox with case-hardened gears. High factors of safety are used throughout the design.

The EM Driver is a digital control using model-based control algorithms for robust control over a wide range of actuator load inertias, friction levels, and external return spring preloads. PC/Windows[®] based software facilitates setup. Several communication protocols are available for monitoring and control.

For performance and installation information, see Woodward manual number 26159.

Specifications

| | |
|----------------------|--|
| Output type | rotary |
| Rated Stroke | 10° to 320° rated (no mechanical stops) |
| System Input Voltage | 90 to 150 Vdc input to the digital EM driver |

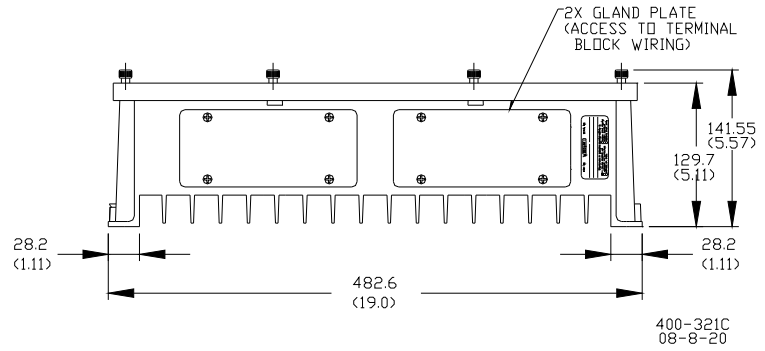
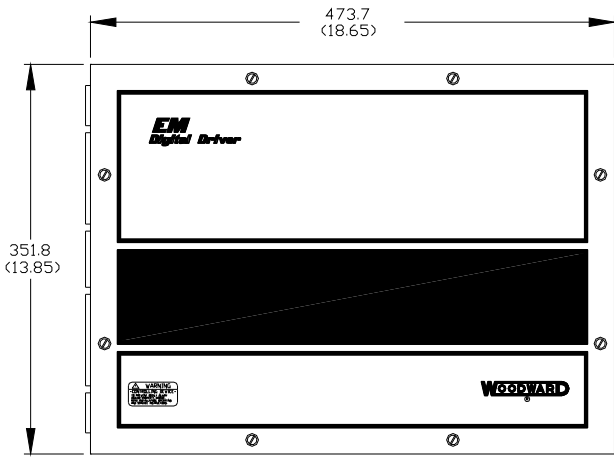
EM-70 Performance Summary

| | |
|---------------|--|
| Torque Output | 84 N·m (62 lb-ft) max continuous 130 N·m (96 lb-ft) for 2.0 second transient |
| Slew Time | 0.112 seconds max for 42° travel at 84 N·m, above 10 °C 0.210 seconds max for 42° travel at 84 N·m, below 10 °C |

EM-140 Performance Summary

| | |
|---------------|--|
| Torque Output | 168 N·m (124 lb-ft) max continuous 260 N·m (192 lb-ft) for 2.0 second transient |
| Slew Time | 0.225 seconds max for 42° travel at 168 N·m, above 10 °C 0.250 seconds max for 42° travel at 168 N·m, below 10 °C |

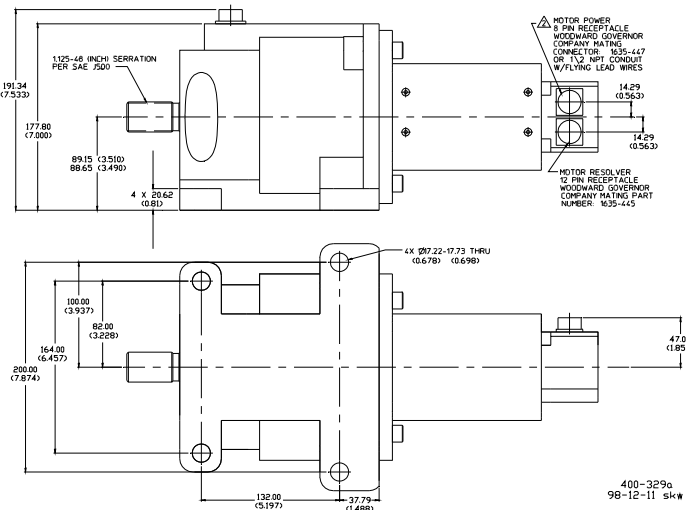
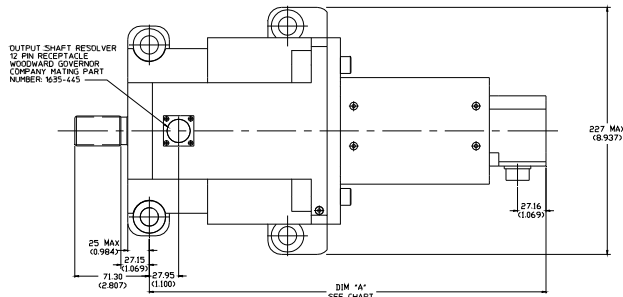
- 6 Hz bandwidth
- Fast slew times
- Position accuracy within 19 arc minutes
- Fault monitoring
- RS-232, RS-485, CAN Bus, 4–20 mA input and readback
- Model-based control
- IP56
- Actuator Listings: CE Marking; CSA version available
- Driver Listings: CE Marking, UL, cUL, and DEMKO
- Actuator tested to 25 G; vibration to 2000 Hz
- Actuator models for –30 to +100 °C or 0 to +125 °C
- Driver –20 to +68 °C
- Precision gearbox, high stiffness, low backlash
- High back drive efficiency for spring return
- Lock-in-last position option
- Brushless servomotor and resolvers



EM-70/140 Driver

NOTE:
SEE 9971-502 FOR PLANT WIRING.

| PART NUMBER | DIM 'A' | MOTOR POWER |
|-------------|----------------|------------------------|
| 8256-200 | 278.64 (14.92) | CIRCULAR RECEPTACLE |
| 8256-201 | 425 (16.53) | |
| 8256-202 | 425 (16.53) | |
| 8256-203 | 425 (16.53) | CONDUIT W/FLYING LEADS |
| 9908-689 | 398.4 (15.67) | |
| 9908-690 | 398.4 (15.67) | |
| 9908-703 | 299.1 (11.77) | |
| 9908-704 | 410.2 (16.15) | |
| 9908-766 | 398.4 (15.67) | |
| 9908-767 | 398.4 (15.67) | |



EM-70/140 Outline Drawing
(Do not use for construction)



PO Box 1519, Fort Collins CO, USA 80522-1519
 1000 East Drake Road, Fort Collins CO 80525
 Tel.: +1 (970) 482-5811 ♦ Fax: +1 (970) 498-3058
www.woodward.com

Distributors & Service

Woodward has an international network of distributors and service facilities. For your nearest representative, call the Fort Collins plant or see the Worldwide Directory on our website.

This document is distributed for informational purposes only. It is not to be construed as creating or becoming part of any Woodward contractual or warranty obligation unless expressly stated in a written sales contract.

Copyright © Woodward 1994–2004, All Rights Reserved

For more information contact: