

Mode Switch Assembly

for use on EGB-10 and larger governors

Description

The Mode Switch is an accessory for EGB governors which indicates whether the electrical actuator or the mechanical governor is controlling. The switch may be wired by the user to provide an audible or visual indication of which portion of the EGB is controlling, or to complete a circuit for some other purpose.

The Mode Switch is mounted on top of the sub-governor case. It is actuated by the mechanical governor power piston when the mechanical governor is inactive.

Wiring

The Mode Switch is wired to the governor connector. The type of indicator and wiring to the governor connector is the user's responsibility.

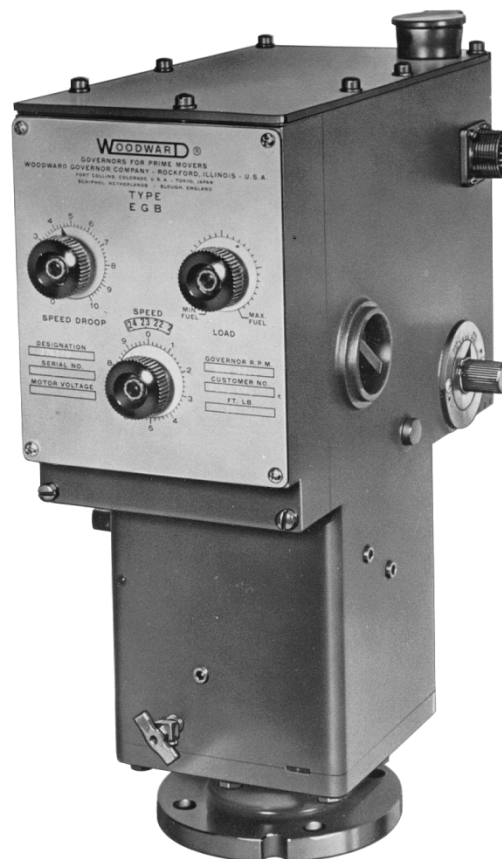
The Mode Switch is suitable for the following electrical specifications:

- 125 Vac, 15 A
- 250 Vac, 15 A
- 125 Vdc, 0.5 A
- 250 Vdc, 0.25 A
- 24 Vdc, 5.0 A
- 12 Vdc, 5.0 A

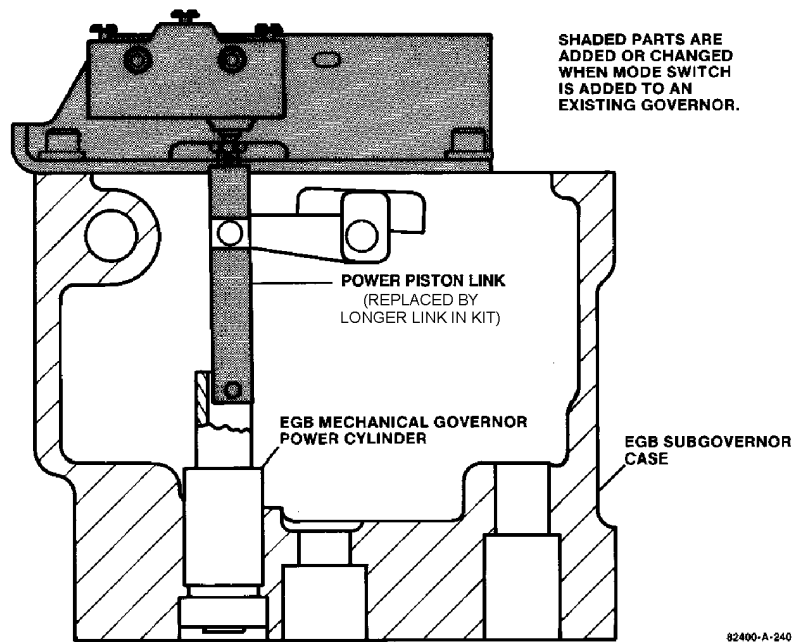
The EGB Mode Switch Assembly includes all of the parts necessary to add a mode switch to an existing EGB governor system.

Installation

The Mode Switch is installed inside the EGB unit and does not change the exterior dimensions of the governor. Some modification of the mechanical governor's power piston linkage is required. Contact a Woodward representative concerning this modification.



- Easily installed on existing governors
- Positive switch contacts for audible or visual indicator
- Simple design
- Accommodates most alarm voltages
- Complete alarm circuit when mechanical portion controls fuel setting



Mode Switch Installed on EGB Sub-Governor



PO Box 1519, Fort Collins CO, USA 80522-1519
 1000 East Drake Road, Fort Collins CO 80525
 Tel.: +1 (970) 482-5811 • Fax: +1 (970) 498-3058
www.woodward.com

Distributors & Service

Woodward has an international network of distributors and service facilities. For your nearest representative, call the Fort Collins plant or see the Worldwide Directory on our website.

This document is distributed for informational purposes only. It is not to be construed as creating or becoming part of any Woodward contractual or warranty obligation unless expressly stated in a written sales contract.

Copyright © Woodward 1983–2001, All Rights Reserved

For more information contact: